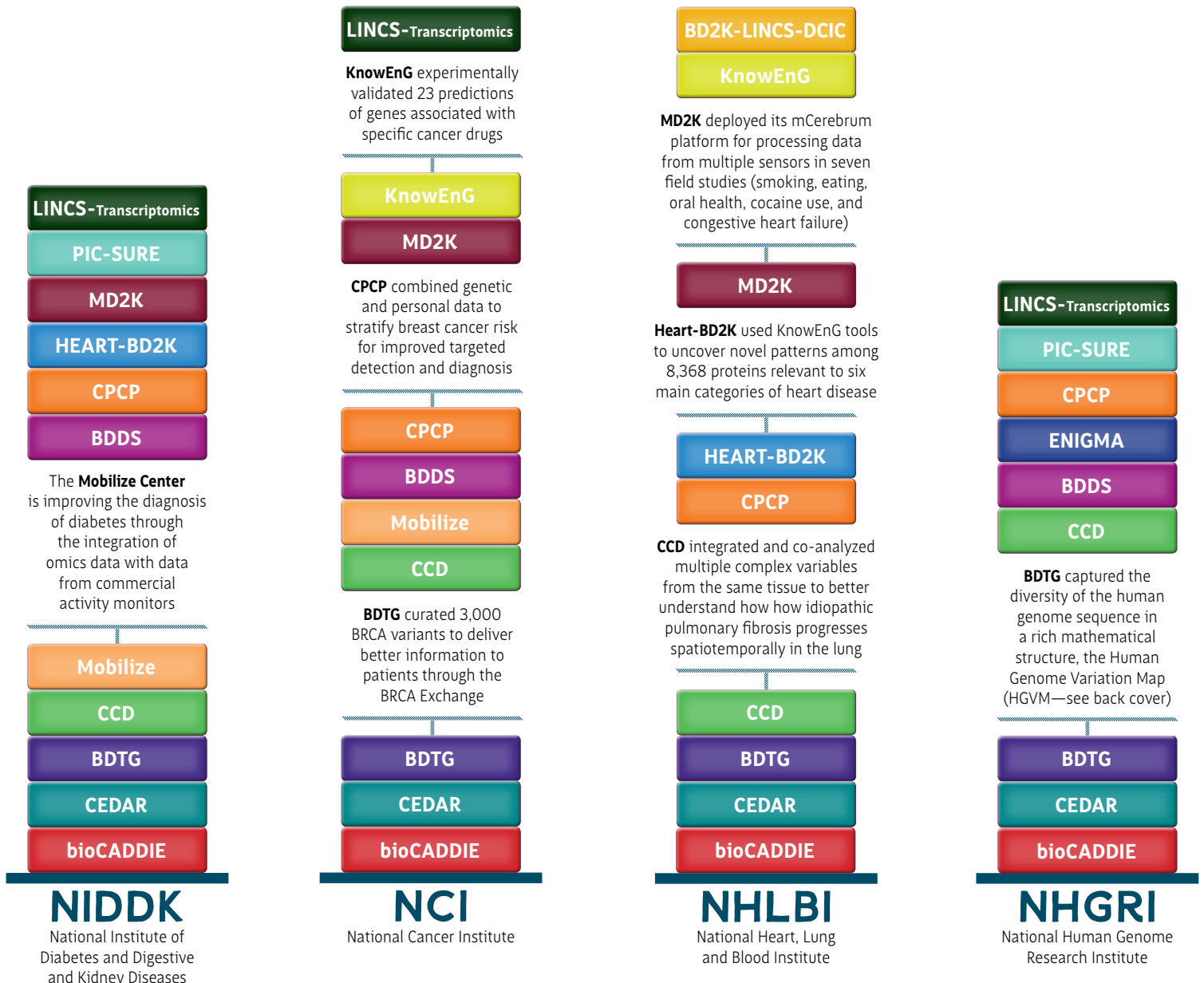
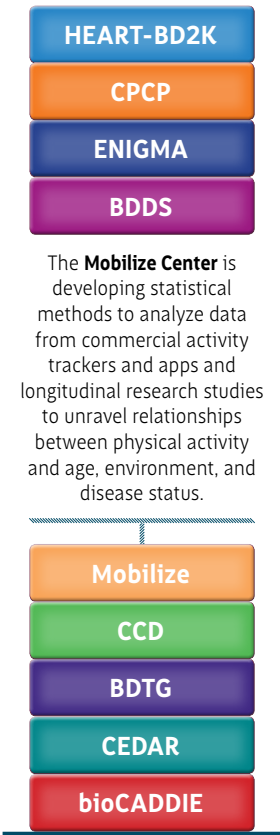


BD2K CENTERS' PAN-NIH IMPACT

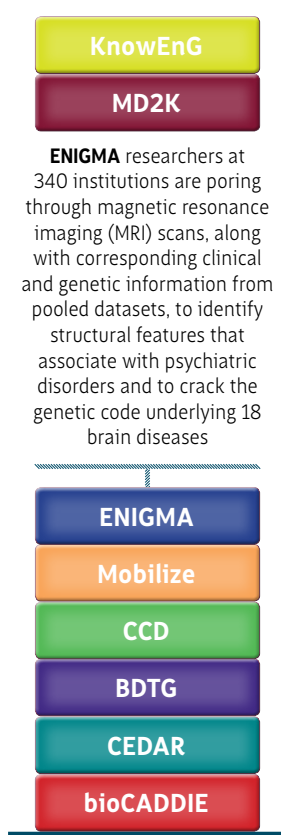
The data science tools and methods developed by the BD2K Centers—from clustering algorithms to data integration approaches, text mining, and image analysis—are valuable across the entire field of biomedicine, benefiting virtually all of the NIH Institutes.

Here we show the impact of the tools and research of the BD2K Centers for 13 of the Institutes. Center names are stacked atop each Institute to which that Center's work relates. A few specific examples are also highlighted in text and more examples are provided in an online interactive graphic at <http://bcr.org/uploads/bd2kimpact.html>.

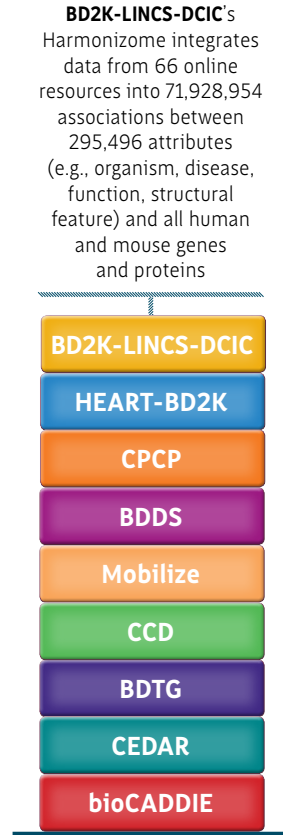




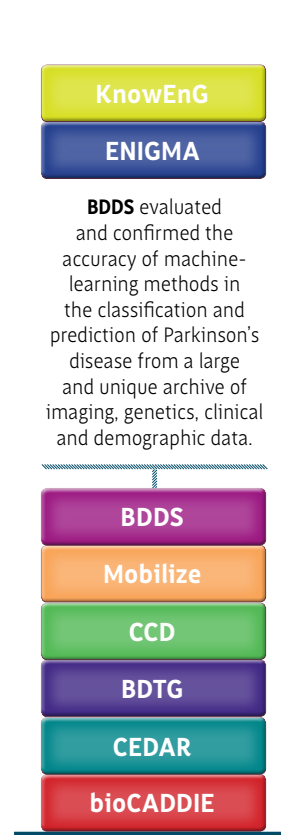
NIA
National Institute on Aging



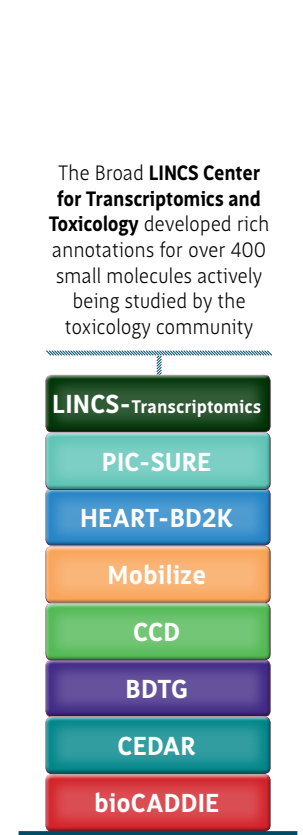
NIMH
National Institute of Mental Health



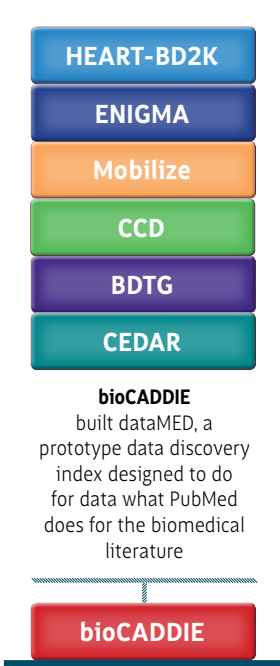
NIGMS
National Institute of General Medical Sciences



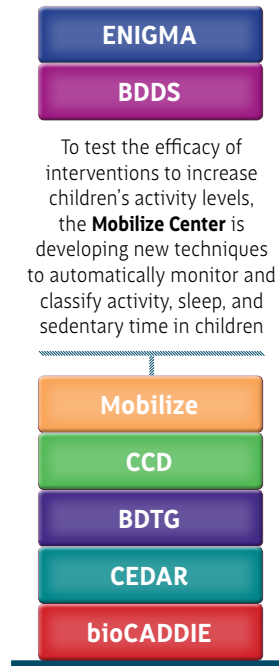
NINDS
National Institute of Neurological Disorders and Stroke



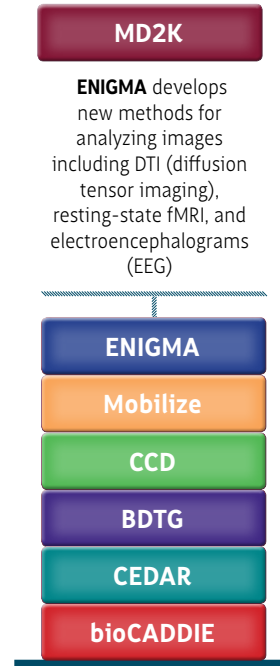
NIEHS
National Institute of Environmental Health Services



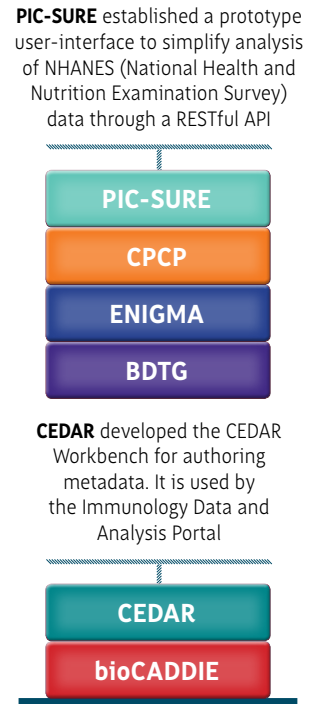
NLM
National Library of Medicine



NICHD
National Institute of Child Health and Human Development



NIBIB
National Institute of Biomedical Imaging and Bioengineering



NIAID
National Institute of Allergy and Infectious Disease