



12 ERROR! What biomedical computing can learn from its mistakes

BY KRISTIN SAINANI, PhD

20 Dogs, Doses and Devices: The FDA's ambitious plans for computational modeling

BY ALEXANDER GELFAND

DEPARTMENTS

1 EDITORIAL | SPARKS OF HOPE FOR A MORE OPEN APPROACH TO SCIENTIFIC RESEARCH AND PUBLISHING BY JOY P. KU, PhD

2 SIMBIOS NEWS | ACCURATE MOLECULAR DYNAMICS FORCE FIELDS FOR THE SCIENTIFIC MASSES BY JOY P. KU, PhD

3 COMPUTING GENE INTERACTIONS: FUNCTIONAL AND STATISTICAL APPROACHES CONVERGE BY CHANDRA SHEKHAR, PhD

5 SIMULATING CELLS IN CONTEXT: BRINGING MECHANICS INTO PLAY BY SARAH WEBB, PhD

7 DE NOVO PROTEIN DESIGN: DESIGNING NOVEL PROTEINS THAT INTERACT BY SARAH WEBB, PhD

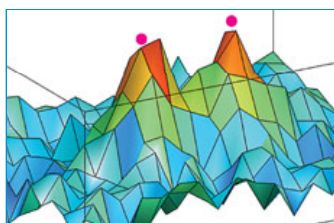
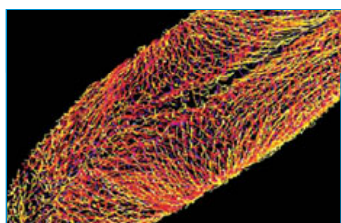
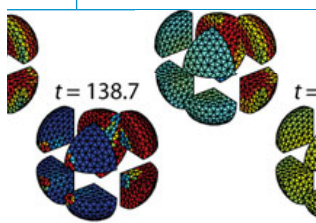
9 VISUALIZATION IN SPACE AND TIME: SEAMLESS PIPELINES NOW AVAILABLE BY KATHARINE MILLER

27 UNDER THE HOOD | RESOLUTION LIMITS OF OPTICAL MICROSCOPY AND THE MIND BY TRISTAN URSELL, PhD, AND KERWYN CASEY ("KC") HUANG, PhD

30 SEEING SCIENCE | 3-D RADIOLOGY—WHO KNEW IT COULD LOOK SO GOOD? BY KATHARINE MILLER

Cover Art: Created by Rachel Jones of Wink Design Studio using: newspaper image © Onur Ersin and thumbs down image © la64, both of Dreamstime.com. Additional headlines courtesy of retractionwatch.wordpress.com. **Page 20:** Created by Rachel Jones of Wink Design Studio using: Great Dane © Isselee; hip implant © Alexonline; green pills © Eclypse78; yellow pills © Py2000; brown pills © Xiphor; red pills © Bart30000; mixed pills © Rozdolyanskiy, all of Dreamstime.com. Also, pacemaker, courtesy of Medtronic, Inc.; and catheter © B. Braun Melsungen AG. **Page 22:** hip implant © Vesna Njagulj; **Page 24:** lab rat © Michał Rózewski; **Page 25:** pills © Pirus01, all of Dreamstime.com.

NOTE: In the printed Spring 2011 issue of BCR, the human connectome graphic on page 3 should have indicated that it is copyrighted (2011) by the Laboratory of Neuro-Imaging at UCLA.



Fall 2011

Volume 7, Issue 2

ISSN 1557-3192

Executive Editor Russ Altman, MD, PhD

Advisory Editor David Paik, PhD

Associate Editor Joy Ku, PhD

Managing Editor Katharine Miller

Science Writers

Alexander Gelfand, Katharine Miller
Kristin Sainani, PhD, Chandra Shekhar, PhD
Sarah Webb, PhD

Community Contributors

Joy Ku, PhD, Tristan Ursell, PhD,
Kerwyn Casey ("KC") Huang, PhD

Layout and Design

Wink Design Studio

Printing

Advanced Printing

Editorial Advisory Board

Russ Altman, MD, PhD, Brian Athey, PhD,
Dr. Andrea Califano, Valerie Daggett, PhD,
Scott Delp, PhD, Eric Jakobsson, PhD,
Ron Kikinis, MD, Isaac Kohane, MD, PhD,
Mark Musen, MD, PhD, Tamar Schlick, PhD,
Jeanette Schmidt, PhD, Michael Sherman
Arthur Toga, PhD, Shoshana Wodak, PhD,
John C. Wooley, PhD

**For general inquiries,
subscriptions, or letters to the editor,
visit our website at
www.biomedicalcomputationreview.org**

Office

Biomedical Computation Review
Stanford University
318 Campus Drive
Clark Center Room S231
Stanford, CA 94305-5444

Biomedical Computation Review
is published by:



The NIH National
Center for Physics-
Based Simulation of
Biological Structures

Publication is made possible through the NIH Roadmap for Medical Research Grant U54 GM072970. Information on the National Centers for Biomedical Computing can be obtained from <http://nihroadmap.nih.gov/bioinformatics>. The NIH program and science officers for Simbios are:

Peter Lyster, PhD (NIGMS)

Grace Peng, PhD (NIBIB)

Jim Gnadt, PhD (NINDS)

Peter Highnam, PhD (NCRR)

Jennie Larkin, PhD (NHLBI)

Jerry Li, MD, PhD (NIGMS)

Nancy Shinowara, PhD (NICHD)

David Thomassen, PhD (DOE)

Janna Wehrle, PhD (NIGMS)

Jane Ye, PhD (NLM)