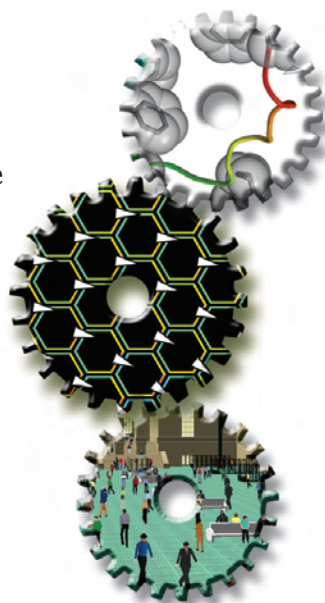


### FEATURE

## 12 Life in Motion: Simulation from Particles to People

BY KATHARINE MILLER

- Jiggling Molecules
- Molecular Movement Takes Time
- The Ratcheting, Springing, Ejecting Ribosome
- The Stretching Cytoskeleton
- One-Way Tissue
- Swimming Larvae in the Natural World
- Crawling Creatures Unplugged
- Running Dinosaurs
- Animating Realistic People on the Go
- Standing Up, Learning, and Taking Trains



### DEPARTMENTS

#### 1 GUEST EDITORIAL: MOON SHOTS FOR BIOMEDICAL COMPUTING BY SCOTT DELP, PhD

#### 2 NEWSBYTES

BY AMBER DANCE, PhD, ALISSA POH, ERIN DIGITALE, PhD, HAYLEY RUTGER, JANE LIAW, JOHN CANNON, MADOLYN BOWMAN ROGERS, PhD, MASSIE SANTOS BALLON, RACHEL TOMPA, PhD, AND ROBERTA KWOK

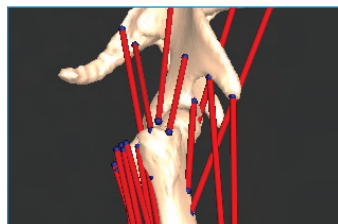
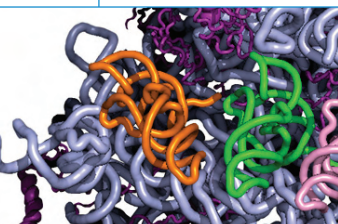
- Sloppy Systems Biology
- Turning Therapeutic Antibodies Into Better Drugs
- Protein Structure Prediction: Getting it Right
- Extinct Sabercat Brought to Life
- Center of Mass Controls Balance
- A Model of Epstein–Barr Virus
- A Digital Human Could Advance Medicine
- Virtual Genomic Scans with Real Data
- Homing in on the Minimum Genome
- Simulating a Scaffold for Bone Growth

#### 11 SIMBIOS NEWS: BCATS – NOT YOUR USUAL BIOMEDICAL COMPUTATION CONFERENCE BY JOY KU, PhD

#### 29 UNDER THE HOOD: ELASTIC COMPUTING, VIRTUALIZATION, AND THE DEMISE OF THE COMMON CLUSTER. BY ALAIN LAEDERACH, PhD

#### 30 SEEING SCIENCE: SIMULATION SIMPLIFIED BY JOY KU, PhD

COVER ART BY  
BETH WALKER OF AFFILIATED DESIGN



### Winter 2007/08

Volume 4, Issue 1  
ISSN 1557-3192

#### Executive Editor

David Paik, PhD

#### Managing Editor

Katharine Miller

#### Associate Editor

Joy Ku, PhD

#### Science Writers

Katharine Miller	John Cannon
Amber Dance, PhD	Madolyn Bowman
Alissa Poh	Rogers, PhD
Erin Digitale, PhD	Massie Santos Ballon
Hayley Rutger	Rachel Tompa, PhD
Jane Liaw	Roberta Kwok

#### Community Contributors

Scott Delp, PhD  
Joy Ku, PhD  
Alain Laederach, PhD

#### Layout and Design

Affiliated Design

#### Printing

Advanced Printing

#### Editorial Advisory Board

Russ Altman, MD, PhD  
Brian Athey, PhD  
Andrea Califano, PhD  
Valerie Daggett, PhD  
Scott Delp, PhD  
Eric Jakobsson, PhD  
Ron Kikinis, MD  
Isaac Kohane, MD, PhD  
Paul Mitiguy, PhD  
Mark Musen, MD, PhD  
Tamar Schlick, PhD  
Jeanette Schmidt, PhD  
Michael Sherman  
Arthur Toga, PhD  
Shoshana Wodak, PhD  
John C. Wooley, PhD

**For general inquiries, subscriptions, or letters to the editor, visit our website at [www.biomedicalcomputationreview.org](http://www.biomedicalcomputationreview.org)**

#### Office

*Biomedical Computation Review*  
Stanford University  
318 Campus Drive  
Clark Center Room S231  
Stanford, CA 94305-5444

*Biomedical Computation Review* is published quarterly by Simbios National Center for Biomedical Computing and supported by the National Institutes of Health through the NIH Roadmap for Medical Research Grant U54 GM072970. Information on the National Centers for Biomedical Computing can be obtained from <http://nihroadmap.nih.gov/bioinformatics>. The NIH program and science officers for Simbios are:

Peter Lyster, PhD (NIGMS)  
Jennie Larkin, PhD (NHLBI)  
Jennifer Couch, PhD (NCI)  
Semahat Demir, PhD (NSF)  
Peter Highnam, PhD (NCRR)  
Jerry Li, MD, PhD (NIGMS)  
Richard Morris, PhD (NIAID)  
Grace Peng, PhD (NIBIB)  
David Thomassen, PhD (DOE)  
Ronald J. White, PhD (NASA/USRA)  
Jane Ye, PhD (NLM)  
Yuan Liu, PhD (NINDS)