

FEATURES

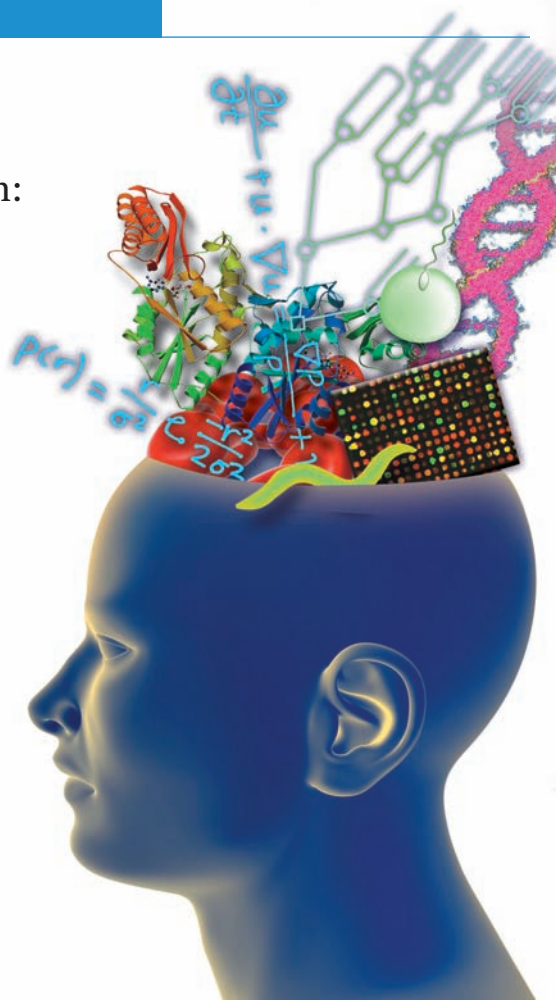
7 Packing It All In: Curricula for Biomedical Computing

BY SHAWNE NEEPER

14 The Dawn of Brain-Machine Interfaces

Brain implants are giving hope to the disabled and revolutionizing neuroscience

BY KRISTIN COBB, PhD



DEPARTMENTS

1 FROM THE EDITOR:
WELCOME BACK
BY DAVID PAIK, PhD

2 NEWS BYTES

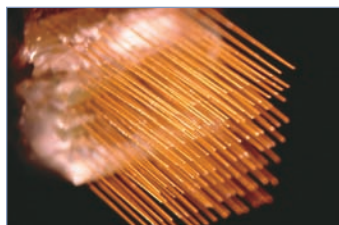
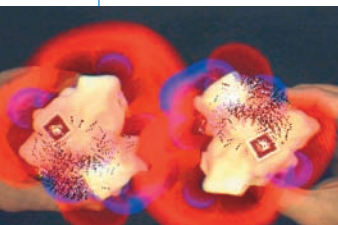
- Interactive Handheld Molecules
- Bacteria with Byte
- Simulating Faulty Folding: A Theoretical Model of Prion Propagation
- An Unfolding Story
- *PLoS Computational Biology* Launched
- Reliable Models Now Available

22 EDITOR'S PICKS BY DAVID PAIK, PhD

24 UNDER THE HOOD: TWIN CURSES PLAGUE BIOMEDICAL DATA ANALYSIS
BY RAY SOMORJAI, PhD

26 SEEING SCIENCE: ART THAT'S A BLAST
BY KATHARINE MILLER

ON THE COVER: HUMAN PROFILE © PHOTOGRAPHER: ALEX PUENTES, DREAMSTIME.COM.
EGG AND SPERM © PHOTOGRAPHER: DANIELA SPYROPOULOU, DREAMSTIME.COM.
RED BLOOD CELLS © PHOTOGRAPHER: MONIKA WISNIEWSKA, DREAMSTIME.COM.
DNA © PHOTOGRAPHER: DIMITRIOS KESSARIS, DREAMSTIME.COM.
MODEL OF ENZYME FROM M. TUBERCULOSI, CREDIT: MYCOBACTERIUM TUBERCULOSIS CENTER
COVER ART BY RACHEL C. JONES OF AFFILIATED DESIGN.



Fall 2005

Volume 1, Issue 2

ISSN 1557-3192

Executive Editor

David Paik, PhD

Managing Editor

Katharine Miller

Science Writers

Kristin Cobb, PhD

Katharine Miller

Shawne Neeper

Community Contributors

Ray Somorjai, PhD

Layout and Design

Affiliated Design

Printing

Advanced Printing

Editorial Advisory Board

Russ Altman, MD, PhD

Valerie Daggett, PhD

Scott Delp, PhD

Eric Jakobsson, PhD

Ron Kikinis, MD

Isaac Kohane, MD, PhD

Tamar Schlick, PhD

Jeanette Schmidt, PhD

Michael Sherman

Arthur Toga, PhD

Shoshana Wodak, PhD

John Wooley, PhD

For general inquiries, subscriptions, or letters to the editor, visit our website at www.biomedicalcomputationreview.org

Office

Biomedical Computation Review
Stanford University
318 Campus Drive
Clark Center Room S170
Stanford, CA 94305-5444

Biomedical Computation Review is published quarterly as part of the dissemination efforts of Simbios, one of the NIH National Centers for Biomedical Computation (NCBC). The NIH program and science officers for the grant are:

Peter Lyster, PhD (NIGMS)

Peter Highnam, PhD (NCRR)

Jennifer Couch, PhD (NCI)

Semahat Demir, PhD (NSF)

Charles Friedman, PhD (NLM)

Jennie Larkin, PhD (NHLBI)

Jerry Li, MD, PhD (NIGMS)

Wen Masters, PhD (NSF)

Richard Morris, PhD (NIAD)

Grace Peng, PhD (NIBIB)

David Thomassen, PhD (DOE)

Ronald J. White, PhD (NASA/USRA)